



MATERNAL & CHILD HEALTH



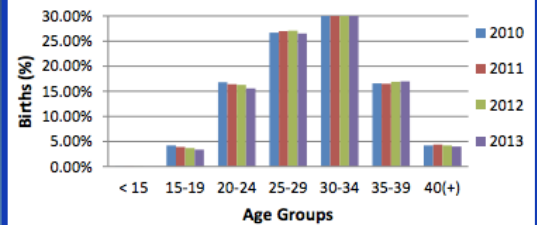
2013-2014

Maternal Age



In 2013, the age of women giving birth in Central NJ ranged from 13-54. The average age was 29.87

Births by Maternal Age, 2010-2013



Teen Births



Since 2009 there has been a decrease in the region's teen births. In 2013, out of the six Central NJ Counties, Monmouth County was number four in highest teen births.

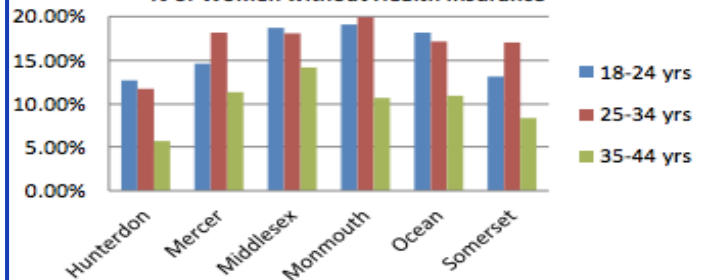
2013 Number of Births by Maternal Age Groups

Age group (% of total deliveries in County)	Hunterdon	Mercer	Middlesex	Monmouth	Ocean	Somerset
< 15 (%)	0 (0%)	1 (0%)	3 (0%)	1 (0%)	2 (0%)	1 (0%)
15 - 19 (%)	5 (.7%)	227 (5.8%)	265 (4%)	164 (2.9%)	210 (2.8%)	72 (3.1%)
20 - 24 (%)	56 (8.2%)	661 (17%)	943 (14.1%)	680 (12.2%)	1,661 (22.5%)	223 (9.5%)
25 - 29 (%)	147 (21.5%)	930 (23.9%)	1,828 (27.4%)	1,375 (24.6%)	2,224 (30.1%)	539 (23.1%)
30 - 34 (%)	276 (40.4%)	1,242 (31.9%)	2,288 (34.2%)	2,031 (36.4%)	2,035 (27.5%)	882 (37.7%)
35 - 39 (%)	161 (23.5)	678 (17.4%)	1,096 (16.4%)	1,060 (19%)	1,041 (14.1%)	493 (21.1%)
40 + (%)	39 (5.7%)	150 (3.9%)	260 (4.8%)	268 (4.8%)	215 (2.9%)	128 (5.5%)
Total N (%)	684 (100%)	3,889 (100%)	6,683 (100%)	5,579 (100%)	7,388 (100%)	2,338 (100%)

Health Insurance Coverage

Lack of health insurance coverage is often associated with unmet medical needs due to cost. This often leads to pregnant women being at risk for lack of or delayed primary and preventative care. In Monmouth County, about 4% of women under the age of 18 are uninsured and women between the ages of 25 to 34 have the highest uninsured rates in New Jersey.

% of Women without Health Insurance



Childhood Lead Poisoning

Access to health insurance is an important factor in obtaining prenatal care. It is also important for mothers to have access to health care and/or insurance even after their child is born. Another important issue arising in New Jersey is childhood lead poisoning. All children are required to be tested at 12 and 24 months of age and again at least once between the ages of 3 and 6. Awareness about the affects of lead poisoning is crucial and can begin with the water in your home.

Percentage of Children Tested by SFY
SFY 2014: Number of Children <6 years of Age by BLL and County of Residence

County	Total Children*	% Tested	Blood Lead Level (µg/dL)					Total
			<5	5-9	10-14	15-19	20-44	
ATLANTIC	19,909	25.3%	4,869	144	23	4	6	5,046
BERGEN	61,192	20.4%	12,314	121	11	11	5	12,463
BURLINGTON	31,546	9.5%	2,946	38	3	2	2	2,991
CAMDEN	40,195	13.3%	5,226	71	21	10	10	5,339
CAPE MAY	5,423	11.7%	622	8	2		3	635
CUMBERLAND	12,963	23.3%	2,892	101	20	3	5	3,021
ESSEX	64,591	39.3%	24,480	719	112	49	45	25,407
GLOUCESTER	21,059	6.4%	1,328	16	2	2	3	1,351
HUDSON	49,759	35.9%	17,458	305	49	18	12	17,843
HUNTERDON	7,484	12.4%	909	16	4	1		930
MERCER	26,052	22.3%	5,649	125	33	7	3	5,817
MIDDLESEX	60,249	20.2%	11,956	159	26	12	7	12,163
MONMOUTH	42,404	15.3%	6,368	77	18	5	4	6,472
MORRIS	33,493	11.7%	3,852	34	15	2	1	3,904
OCEAN	46,657	23.7%	10,951	75	10	3	3	11,042
PASSAIC	41,179	35.7%	14,321	317	46	7	13	14,705
SALEM	4,625	14.8%	624	48	6	4	3	685
SOMERSET	23,622	12.1%	2,834	22	9		2	2,867
SUSSEX	9,701	11.0%	1,061	9			1	1,071
UNION	43,085	30.7%	12,901	248	37	14	16	13,218
WARREN	7,434	12.7%	923	16	5	1		945
Not Specified	N/A	N/A	21,376	1,980				23,356
Total	652,622	26.2%	165,860	4,649	452	155	144	171,271

The following chart represents the number of children who were tested by the state fiscal year (SFY). Monmouth County had 42,404 (15.3%) children under the age of six tested for lead. Amongst those tested, 100 children had a blood lead level (BLL) above the state's required limit.

Education is highly associated with health-related quality of life. In 2013, of the 29,066 mothers in Central NJ, most (26%) reported having obtained a high school diploma. 46% of mothers in Monmouth County reported having a college or beyond degree. With highly educated mothers and only 15% of children getting tested for lead indicates that there is a lack of accessible healthcare and/or communication in the community. **If you are a mother with questions or concerns about your child's health or want to get information on how you can get your child screened for lead, call 732-493-9520**

2012 - 2013 Maternal Educational Attainment

